

HALL 2

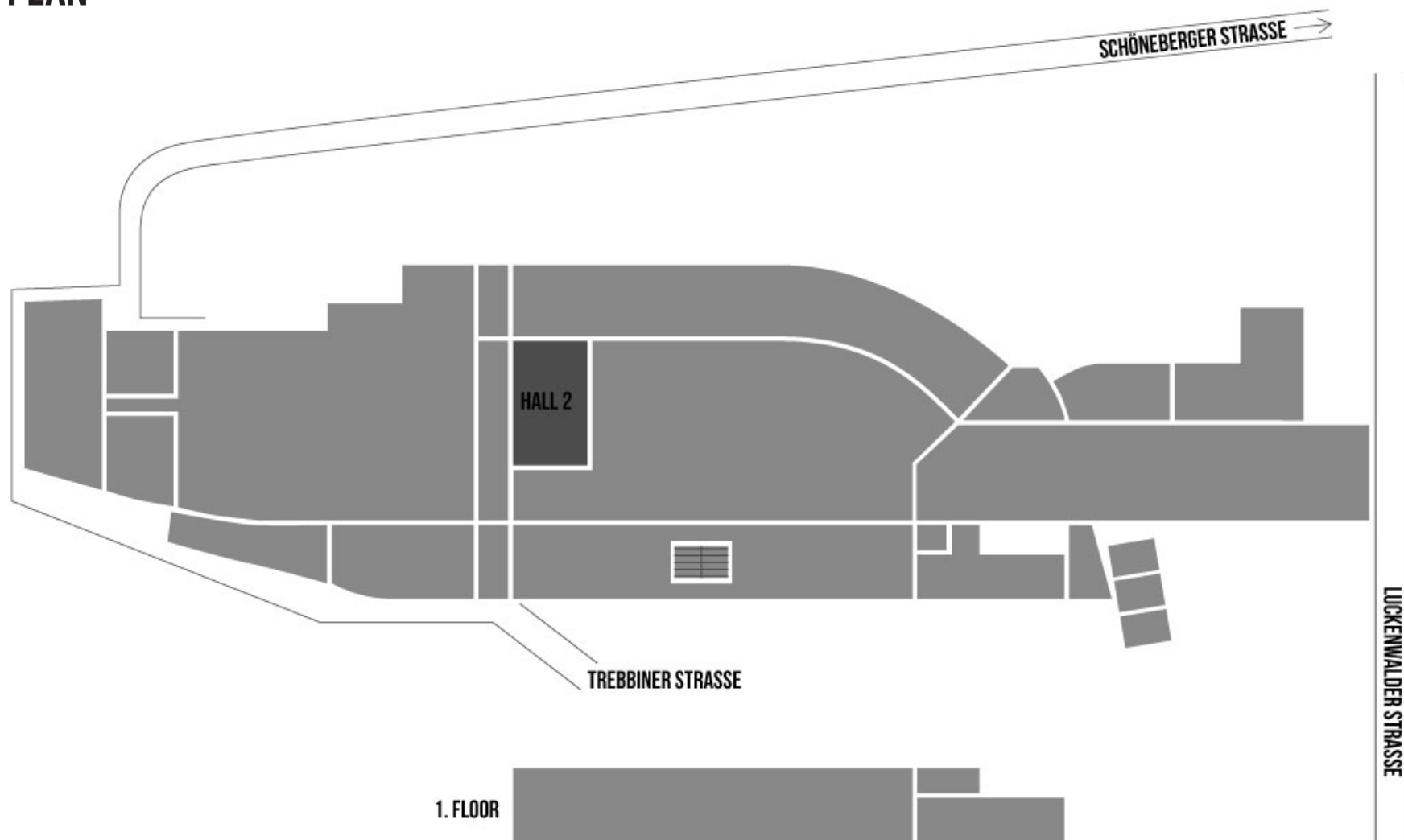
STATION-BERLIN | EIGHT HALLS, 23.000 SQUARE METRES OF SPACE. INFINITE POSSIBILITIES.



STATION BERLIN

HALL 2

GROUND PLAN

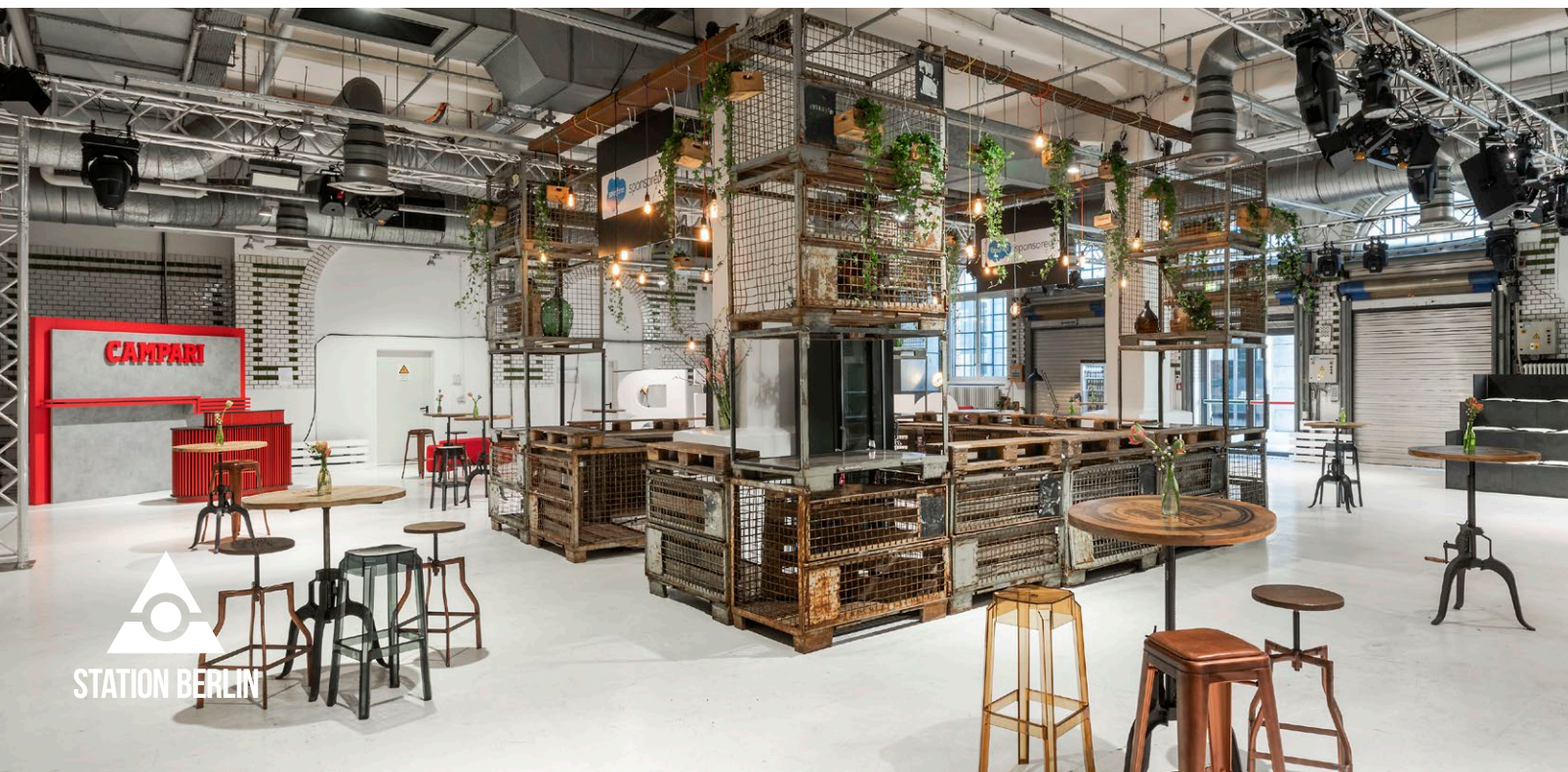




HALL 2

INFO

The brick building with its rounded arches was formerly used for parcel handling. Today, it often serves as a backstage and catering area as well as a separate event space in combination with Halls 1, 3 or 7.

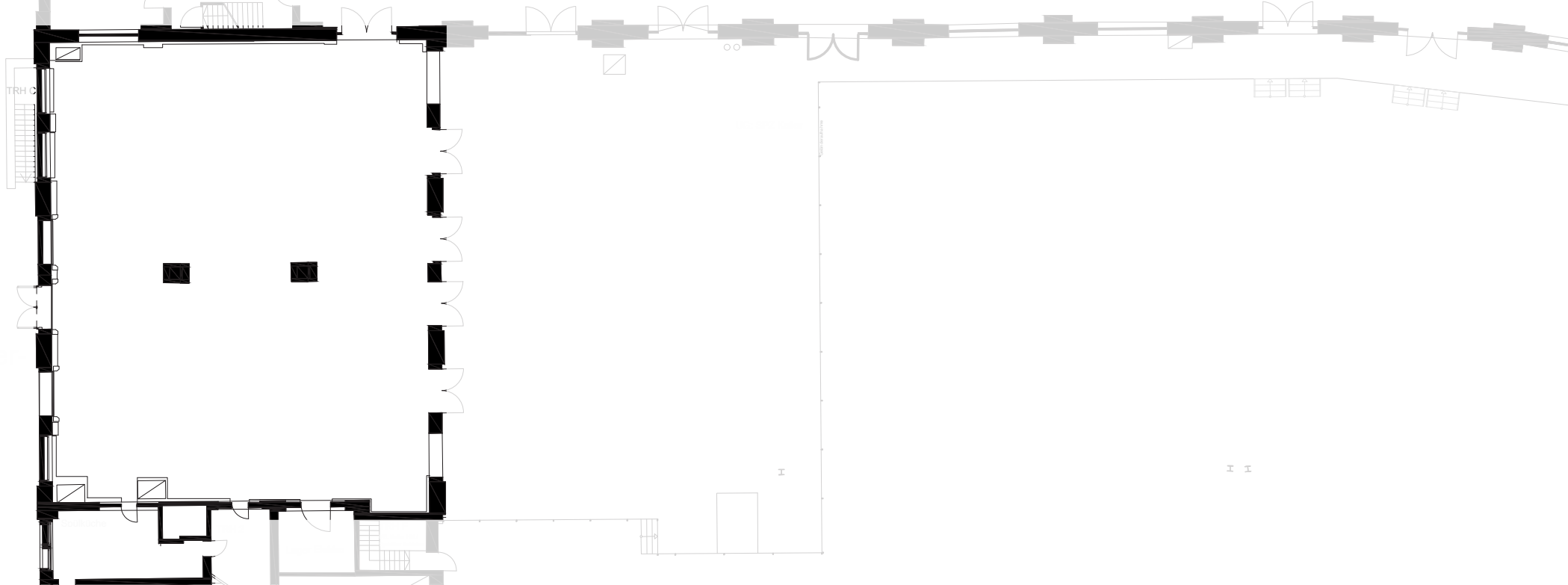


HALL 2

USE

Centrally located, Hall 2 lies at the heart of the entire site and in terms of logistics, it is perfectly connected with the adjacent halls.

On the upper floor, there are five production rooms that can additionally be rented as crew areas or artists' dressing rooms.



HALL 2

FACTS

Floor space	440 sqm
Dimensions	22 x 20 m
Clearance height	5,35 m
Lamp height	3,60m
Level	Ground Floor
Barrier-free access	
Hall 2	Yes
Production rooms	No
Disabled toilet	No

SEATING*

Row	340 Seats
Banquet	160 Seats
Without seating	380 Standing

*Reference point. The maximum room capacity depends on the specific room concept and has always be considered individually.

OTHER

Power	Yes
Water	Yes
LAN/WiFi	Yes/Yes
Truck/car access (via ramp)	No/Yes
Heating/Cooling	Yes/No
Blackout	Optional